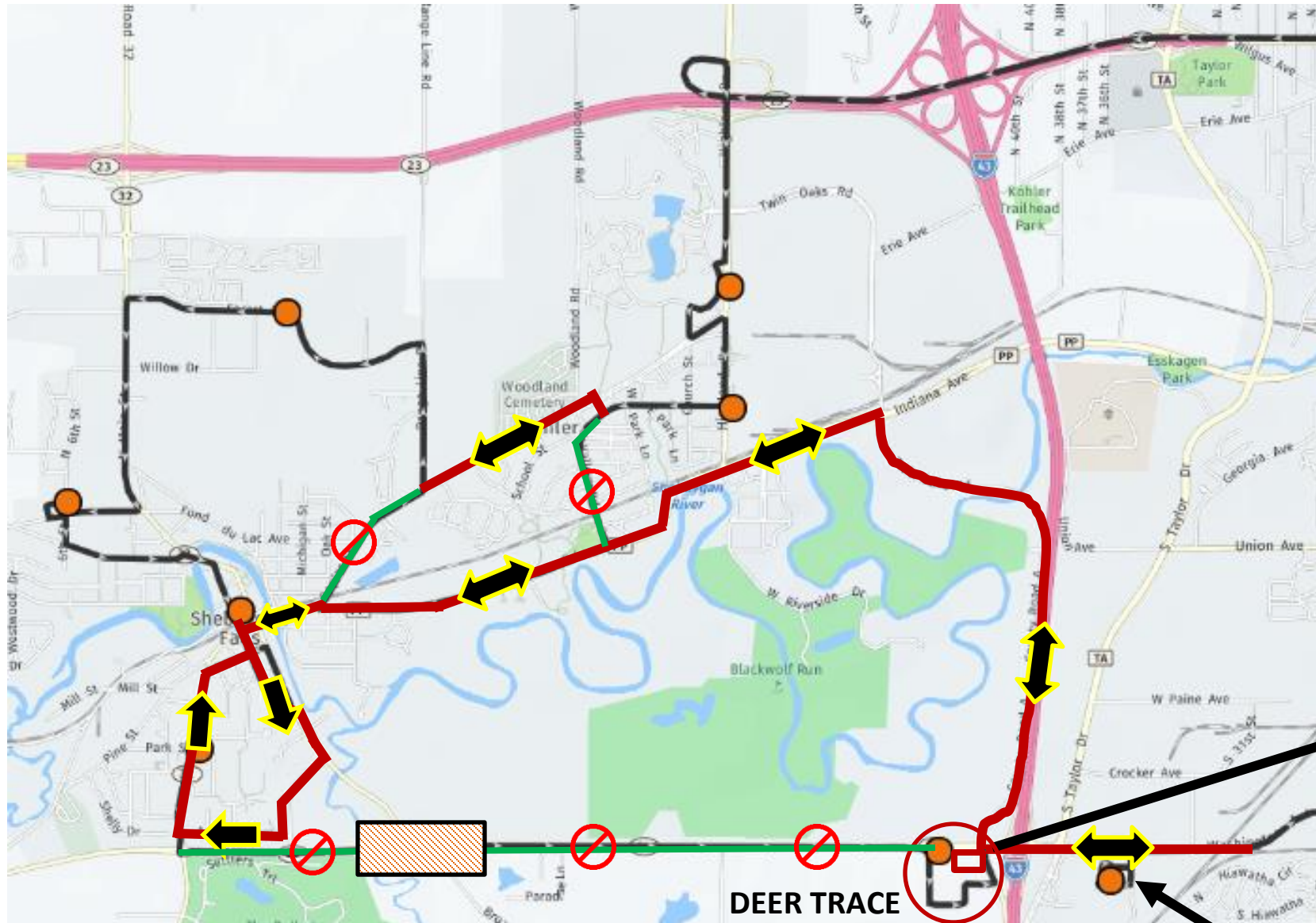


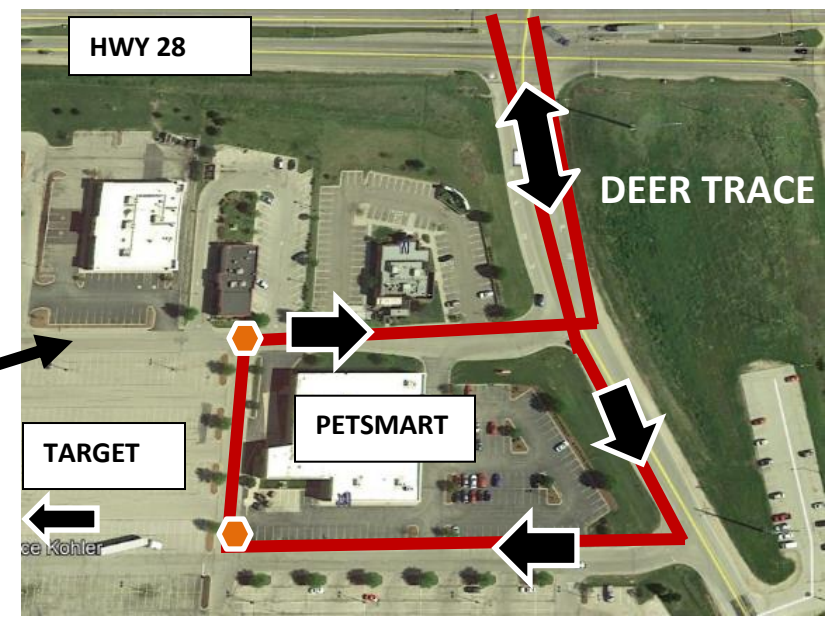
# HWY 28 CLOSURE & DETOUR FOR 20N & 20S

## APRIL 1, 2021 UNTIL FURTHER NOTICE



Updated Route Map Available at:  
[Transit.unitegps.com/SM](https://Transit.unitegps.com/SM)

- REGULAR ROUTE
- DETOUR ROUTE
- NO SERVICE
- CONSTRUCTION ZONE
- BUS STOPS AT DEER TRACE



NO SERVICE TO WALMART